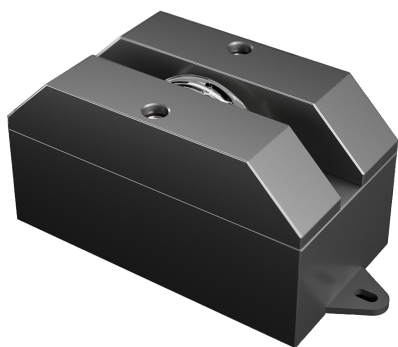




# Luna 08

## Product code

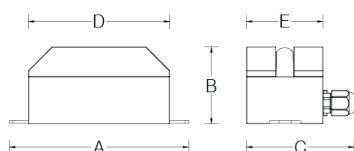
LUN08ABD024RWO8



## Features

IP rating	IP66
IK rating	08
Source type	High power LED
LED number	4
CRI	80
Step McAdam	3
Source life time	>110.000h L70 B10 at 25°C ambient temperature
Source flux	685 lm
Source efficiency	91,4 lm/W
Delivered flux	580 lm
Delivered efficiency	69,4 lm/W
Input power	8W
Voltage	24 VDC
Insulation class	insulation class III
Power supply	Power supply remote, constant voltage
Management interface	DMX-512A and RDM-compatible
Light colour/CCT	RGBW (W=5700K)
Beam angle	115°X3°
Mounting	surface
Finishing	black anodized
Net weight	0,5kg

## Technical drawing



## Temperature limits

Working temperature	from -30°C to +50°C
Storage temperature	from -50°C to +80°C

## Construction

machine-crafted aluminium alloy, silicone gasket, UV-protected Polycarbonate front cover, nickel-plated brass gland connector, pressure compensation valve, waterstop system

## Light control

DMX-512A protocol. Diamante fixtures also work with the DMX-RDM protocol, allowing remote configuration and diagnostics.

## Connection

power supply and signal cable length 0,8m

## Protections

short circuit, overload, overvoltage, thermal (shut off)

## Specifications



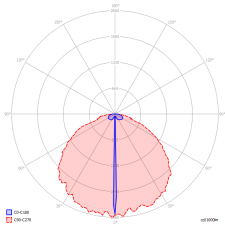
## Dimensions

A	152mm	B	65mm
C	97mm	D	120mm
E	70mm		



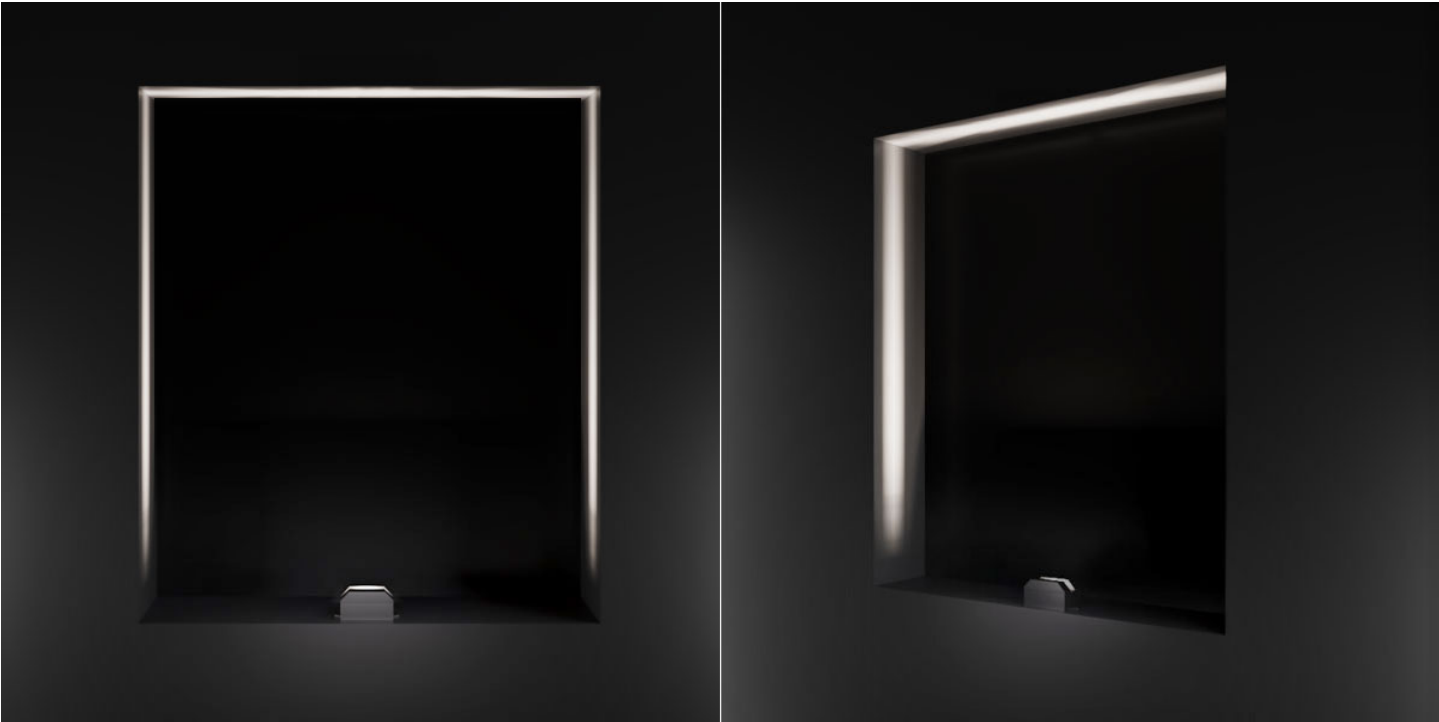
Photometry

115°X3°



RGBW (W=5700K)	0.2 m	38,5 Klux
1,54 Kcd	0.5 m	6,2 Klux
579,24 lm	1 m	1,5 Klux
8	2 m	385 lux
	5 m	62 lux

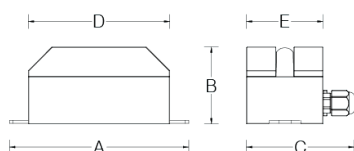
Lighting effects



# Luna 08

**Product code**

LUN08ABD024RWO8

**Client****Project name****Order #****Type****Qty****Technical drawing****Dimensions**

A	152mm	B	65mm
C	97mm	D	120mm
E	70mm		