



# IN-Libra 900

## Product code

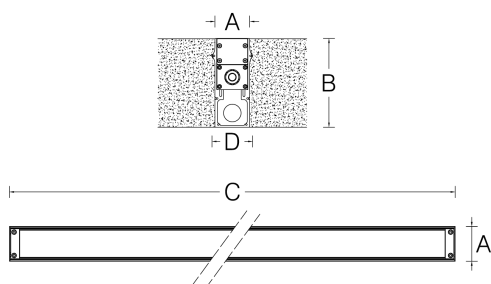
ILB09ANX231SWA2



## Features

IP rating	IP66/67
IK rating	08
Source type	High power LED
LED number	36
CRI	80
Step McAdam	3
Source life time	>110.000h L70 B10 at 25°C ambient temperature
Source flux	3600 lm
Source efficiency	114,9 lm/W
Delivered flux	2600 lm
Delivered efficiency	71,4 lm/W
Input power	36,5W
Voltage	230 V 50/60 Hz
Insulation class	insulation class I
Power supply	power supply unit on board
Management interface	on/off
Light colour/CCT	2200 K
Beam angle	narrow wall washer
Mounting	ground-recessed
Finishing	silver anodized
Net weight	3,5kg

## Technical drawing



## Dimensions

A	49mm	B	125mm
C	928mm	D	58mm

## Temperature limits

Working temperature	from -30°C to +50°C
Storage temperature	from -50°C to +80°C

## Construction

extruded aluminium alloy, silicone sealing, tempered extra-clear sodium-calcium front glass, nickel-plated brass cable gland, pressure compensation valve

## Light control

On/off control, no dimming.

## Connection

Through-wiring, power supply cable length 0,08m with IP68 4-poles connectors

## Protections

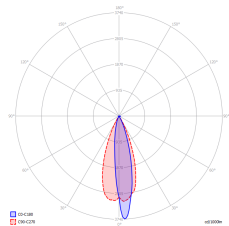
short circuit, overload, overvoltage, thermal (shut off)

## Specifications



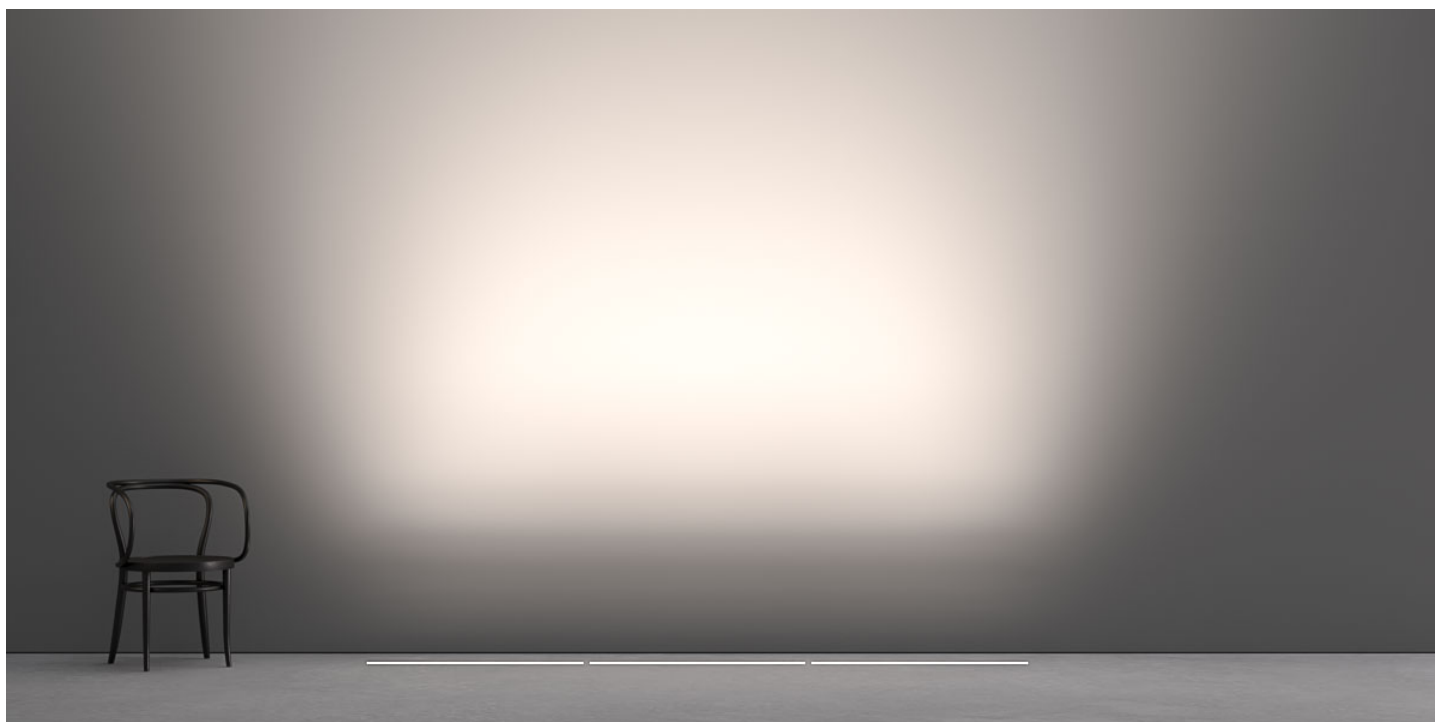
## Photometry

narrow wall washer



2200 K	0.5 m	39,5 Klux
9,87 Kcd	1 m	9,9 Klux
2,60 Klm	2 m	2,5 Klux
36	5 m	395 lux
	10 m	99 lux

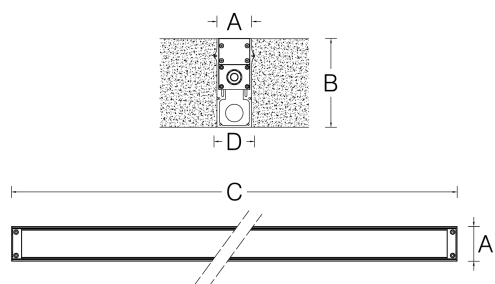
## Lighting effects



# IN-Libra 900

**Product code**

ILB09ANX231SWA2

**Client****Project name****Order #****Type****Qty****Technical drawing****Dimensions**

A	49mm	B	125mm
C	928mm	D	58mm