

IN-Libra 900

Product code

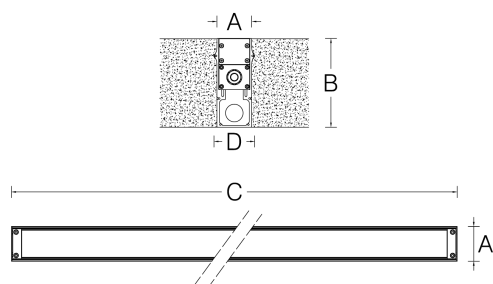
ILB09ANX231CWON



Features

IP rating	IP66/67
IK rating	08
Source type	High power LED
LED number	36
CRI	80
Step McAdam	3
Source life time	>110.000h L70 B10 at 25°C ambient temperature
Source flux	4850 lm
Source efficiency	154,9 lm/W
Delivered flux	3295 lm
Delivered efficiency	90,5 lm/W
Input power	36,5W
Voltage	230 V 50/60 Hz
Insulation class	insulation class I
Power supply	power supply unit on board
Management interface	on/off
Light colour/CCT	5700 K
Beam angle	34°x14°
Mounting	ground-recessed
Finishing	silver anodized
Net weight	3,5kg

Technical drawing



Dimensions

A	49mm	B	125mm
C	928mm	D	58mm

Temperature limits

Working temperature	from -30°C to +50°C
Storage temperature	from -50°C to +80°C

Construction

extruded aluminium alloy, silicone sealing, tempered extra-clear sodium-calcium front glass, nickel-plated brass cable gland, pressure compensation valve

Light control

On/off control, no dimming.

Connection

Through-wiring, power supply cable length 0,08m with IP68 4-poles connectors

Protections

short circuit, overload, overvoltage, thermal (shut off)

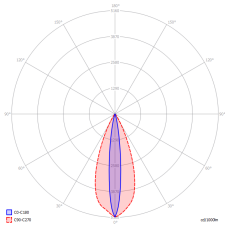
Specifications





Photometry

34°x14°



5700 K	1 m	16,9 Klux
16,95 Kcd	2 m	4,2 Klux
3,29 Klm	5 m	678 lux
36	10 m	169 lux
	20 m	42 lux

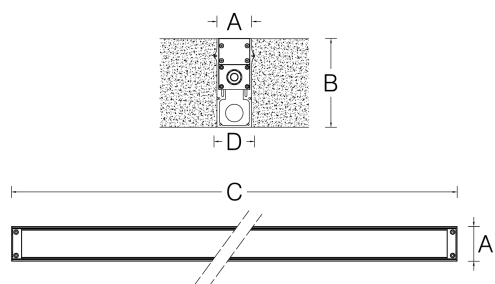
Lighting effects



IN-Libra 900

Product code

ILB09ANX231CWON

Client**Project name****Order #****Type****Qty****Technical drawing****Dimensions**

A	49mm	B	125mm
C	928mm	D	58mm