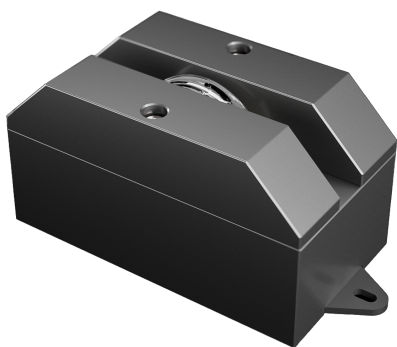




Luna 08

Product code

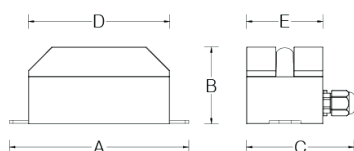
LUN08ABD024RWO9



Features

IP rating	IP66
IK rating	08
Source type	High power LED
LED number	4
CRI	80
Step McAdam	3
Source life time	>110.000h L70 B10 at 25°C ambient temperature
Source flux	685 lm
Source efficiency	91,4 lm/W
Delivered flux	565 lm
Delivered efficiency	67,9 lm/W
Input power	8W
Voltage	24 VDC
Insulation class	insulation class III
Power supply	Power supply remote, constant voltage
Management interface	DMX-512A and RDM-compatible
Light colour/CCT	RGBW (W=5700K)
Beam angle	100°X5°
Mounting	surface
Finishing	black anodized
Net weight	0,5kg

Technical drawing



Temperature limits

Working temperature	from -30°C to +50°C
Storage temperature	from -50°C to +80°C

Construction

machine-crafted aluminium alloy, silicone gasket, UV-protected Polycarbonate front cover, nickel-plated brass gland connector, pressure compensation valve, waterstop system

Light control

DMX-512A protocol. Diamante fixtures also work with the DMX-RDM protocol, allowing remote configuration and diagnostics.

Connection

power supply and signal cable length 0,8m

Protections

short circuit, overload, overvoltage, thermal (shut off)

Specifications



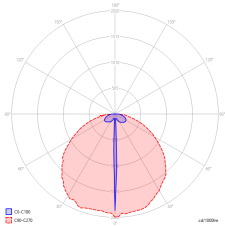
Dimensions

A	152mm	B	65mm
C	97mm	D	120mm
E	70mm		



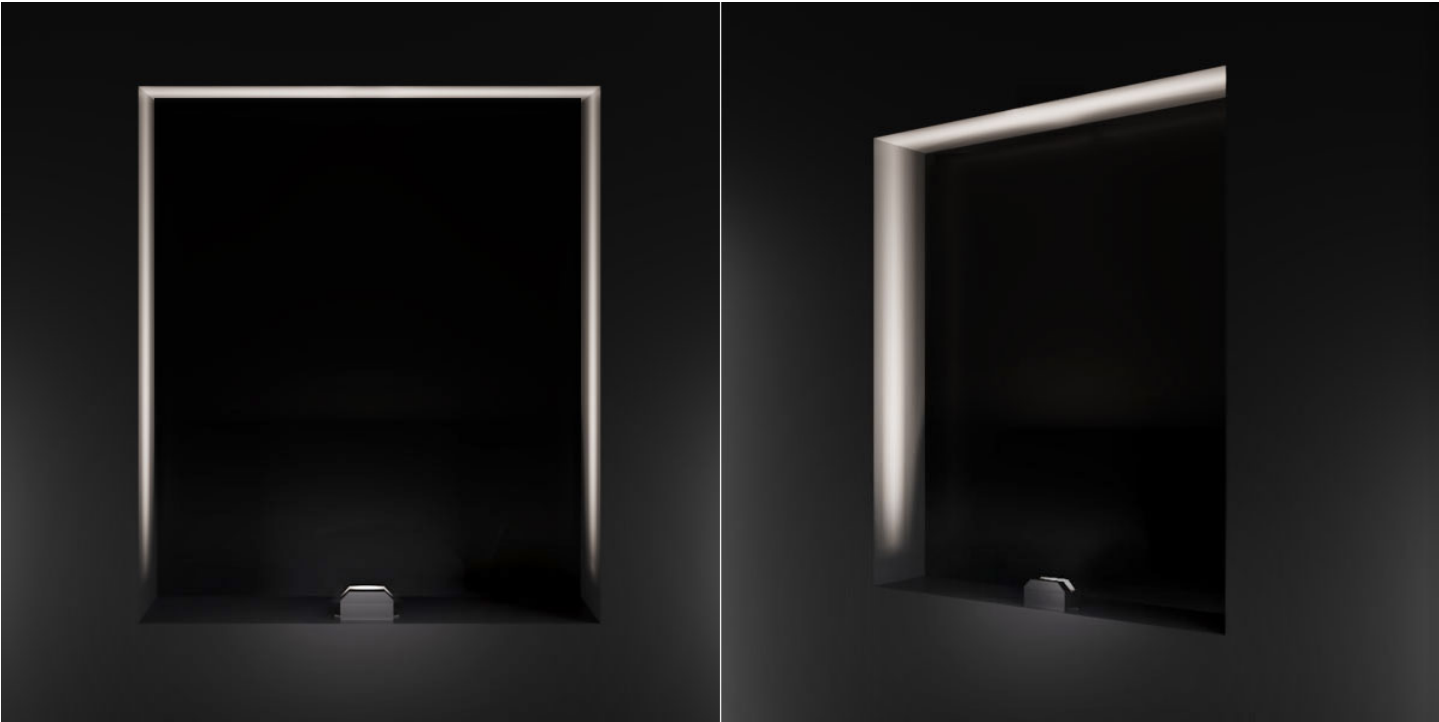
Photometry

100°X5°



RGBW (W=5700K)	0.2 m	28,5 Klux
1,14 Kcd	0.5 m	4,6 Klux
566,78 lm	1 m	1,1 Klux
8	2 m	285 lux
	5 m	46 lux

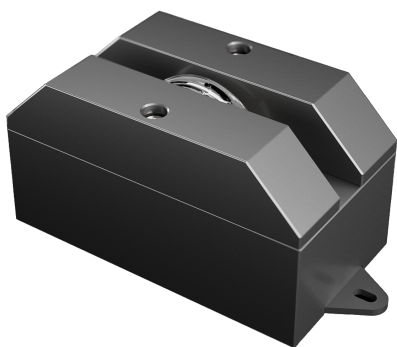
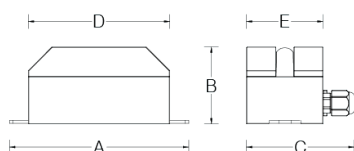
Lighting effects



Luna 08

Product code

LUN08ABD024RWO9

Client**Project name****Order #****Type****Qty****Technical drawing****Dimensions**

A	152mm	B	65mm
C	97mm	D	120mm
E	70mm		