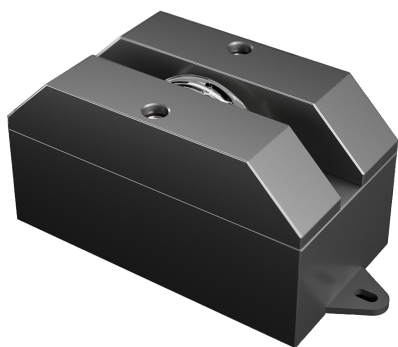




Luna 08

Product code

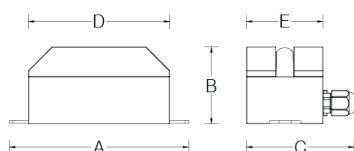
LUN08ABA024WWO8



Features

IP rating	IP66
IK rating	08
Source type	High power LED
LED number	4
CRI	80
Step McAdam	3
Source life time	>110.000h L70 B10 at 25°C ambient temperature
Source flux	910 lm
Source efficiency	124,4 lm/W
Delivered flux	810 lm
Delivered efficiency	99,4 lm/W
Input power	8W
Voltage	24 VDC
Insulation class	insulation class III
Power supply	Power supply remote, constant voltage
Management interface	DALI-2-compatible
Light colour/CCT	3000 K
Beam angle	115°X3°
Mounting	surface
Finishing	black anodized
Net weight	0,5kg

Technical drawing



Temperature limits

Working temperature	from -30°C to +50°C
Storage temperature	from -50°C to +80°C

Construction

machine-crafted aluminium alloy, silicone gasket, UV-protected Polycarbonate front cover, nickel-plated brass gland connector, pressure compensation valve, waterstop system

Light control

This protocol is mainly used for indoor lighting and characterised by a limited data transmission speed (1200 baud). It can control small installations with simple dynamic programmes with slow scene changes. The DALI protocol can control up to 64 luminaires

Connection

power supply and signal cable length 0,8m

Protections

short circuit, overload, overvoltage, thermal (shut off)

Specifications



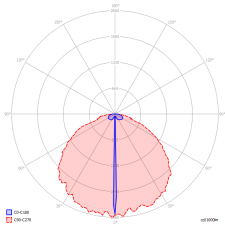
Dimensions

A	152mm	B	65mm
C	97mm	D	120mm
E	70mm		



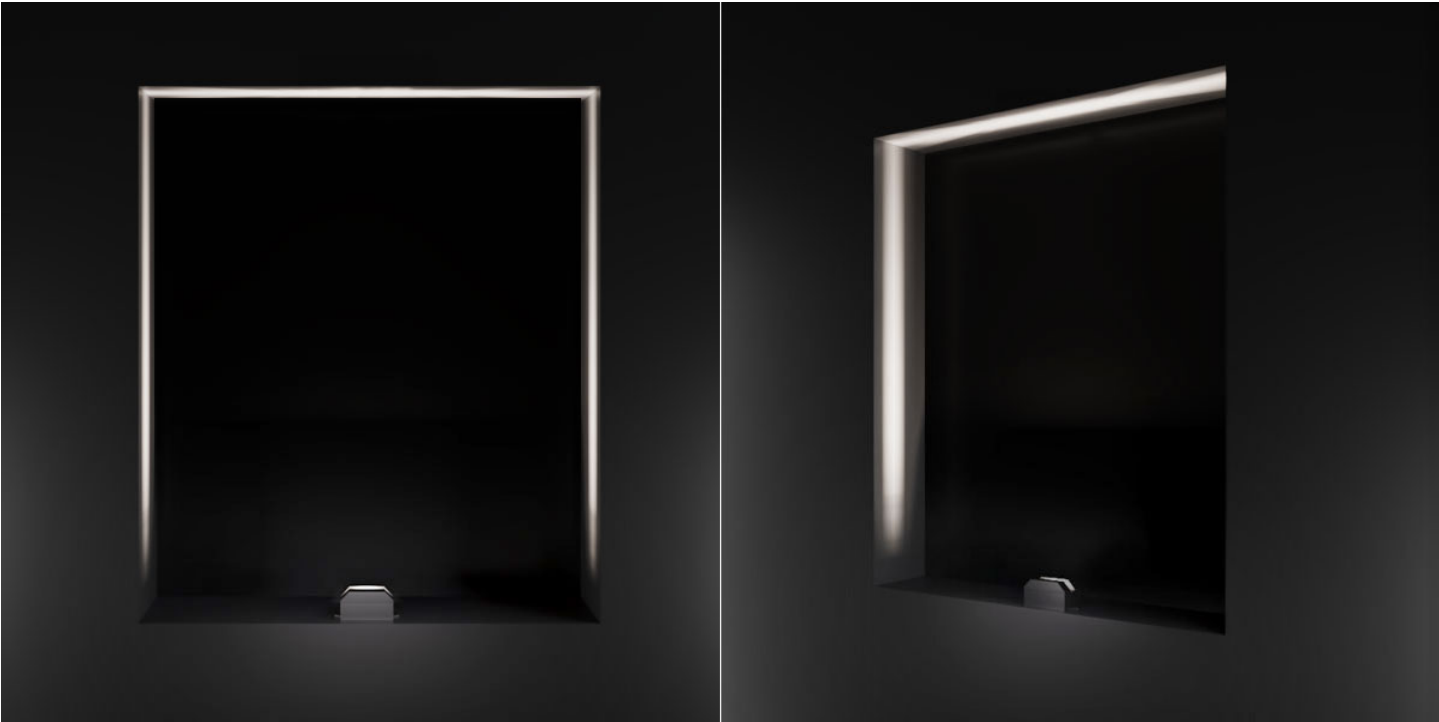
Photometry

115°X3°



3000 K	0.2 m	53,8 Klux
2,15 Kcd	0.5 m	8,6 Klux
808,73 lm	1 m	2,2 Klux
8	2 m	538 lux
	5 m	86 lux

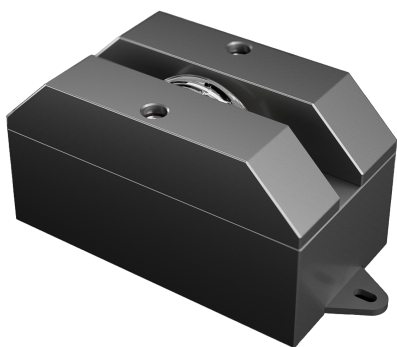
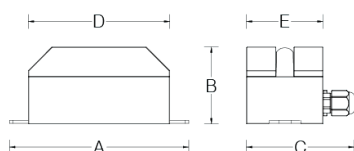
Lighting effects



Luna 08

Product code

LUN08ABA024WWO8

Client**Project name****Order #****Type****Qty****Technical drawing****Dimensions**

A	152mm	B	65mm
C	97mm	D	120mm
E	70mm		