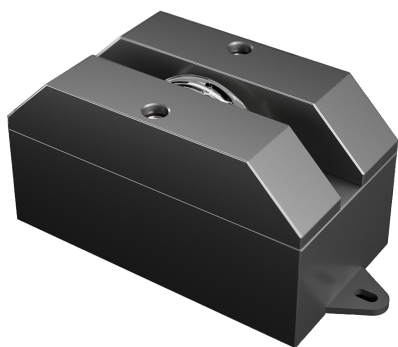




# Luna 08

## Product code

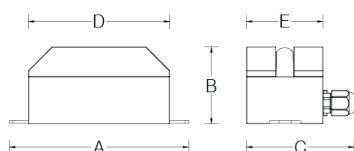
LUN08ABA024NWO8



## Features

IP rating	IP66
IK rating	08
Source type	High power LED
LED number	4
CRI	80
Step McAdam	3
Source life time	>110.000h L70 B10 at 25°C ambient temperature
Source flux	975 lm
Source efficiency	133,0 lm/W
Delivered flux	865 lm
Delivered efficiency	106,3 lm/W
Input power	8W
Voltage	24 VDC
Insulation class	insulation class III
Power supply	Power supply remote, constant voltage
Management interface	DALI-2-compatible
Light colour/CCT	4000 K
Beam angle	115°X3°
Mounting	surface
Finishing	black anodized
Net weight	0,5kg

## Technical drawing



## Temperature limits

Working temperature	from -30°C to +50°C
Storage temperature	from -50°C to +80°C

## Construction

machine-crafted aluminium alloy, silicone gasket, UV-protected Polycarbonate front cover, nickel-plated brass gland connector, pressure compensation valve, waterstop system

## Light control

This protocol is mainly used for indoor lighting and characterised by a limited data transmission speed (1200 baud). It can control small installations with simple dynamic programmes with slow scene changes. The DALI protocol can control up to 64 luminaires

## Connection

power supply and signal cable length 0,8m

## Protections

short circuit, overload, overvoltage, thermal (shut off)

## Specifications



## Dimensions

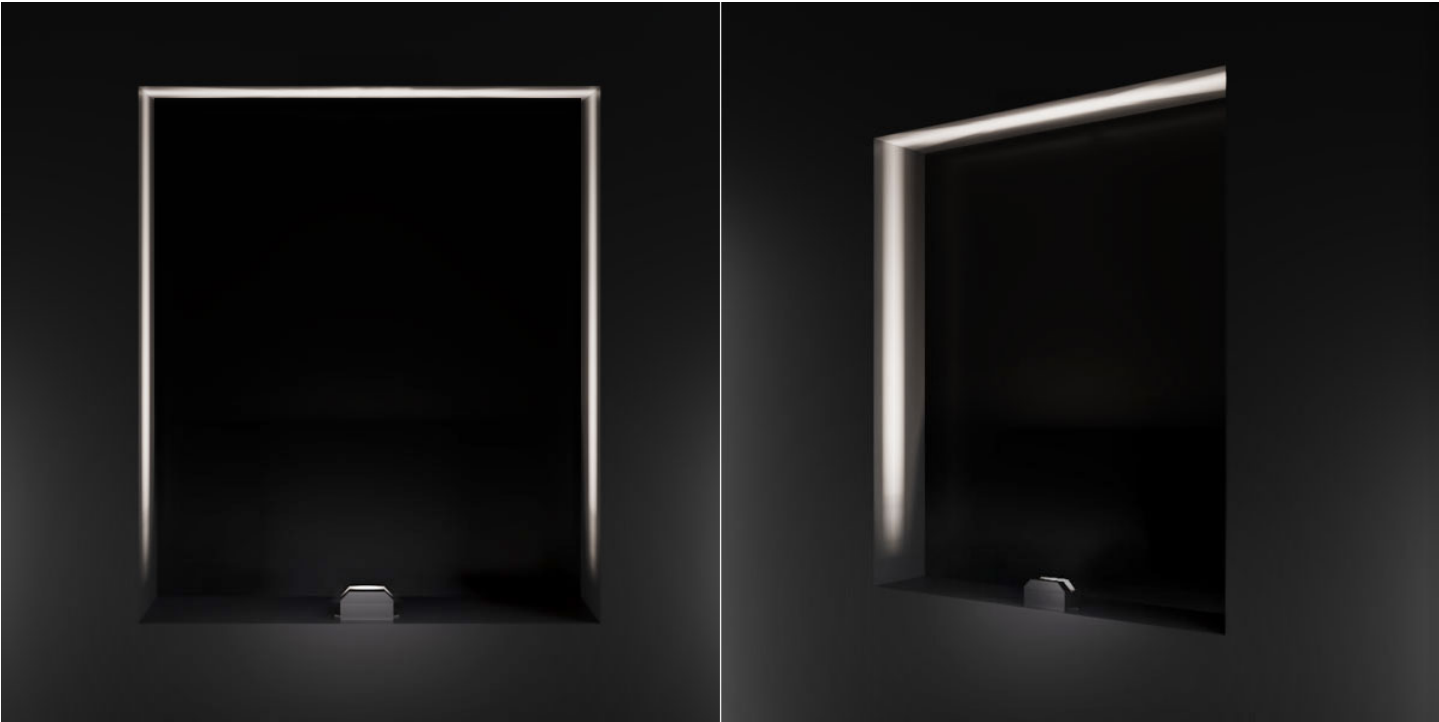
A	152mm	B	65mm
C	97mm	D	120mm
E	70mm		



Photometry

	4000 K	0.2 m	57,5 Klux
	2,30 Kcd	0.5 m	9,2 Klux
	864,53 lm	1 m	2,3 Klux
	8	2 m	575 lux
		5 m	92 lux

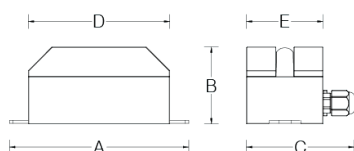
Lighting effects



# Luna 08

**Product code**

LUN08ABA024NWO8

**Client****Project name****Order #****Type****Qty****Technical drawing****Dimensions**

A	152mm	B	65mm
C	97mm	D	120mm
E	70mm		